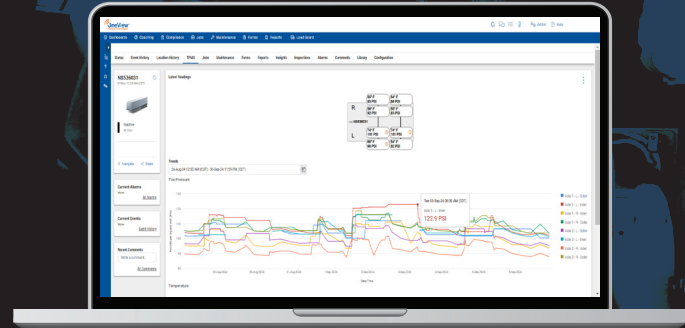


TIRE PRESSURE MONITORING SYSTEM



Tire Pressure Monitoring Made Easy

Connectivity. Visibility. Productivity.

The Tire Pressure Monitoring System allows for visibility of individual tire pressures and temperatures, giving you the ability to make informed tire maintenance decisions from the cab, the yard, or the main office to extend tire life and improve safety.

Key Features

-  Quick, Self-Install
-  Alerts via In-Cab, Text and/or Email
-  Small, Inflate-thru Bluetooth Sensor
-  5-Year Battery Life
-  Identifies Tire Leaks Remotely
-  Works with Trailers & Power Units
-  Monitors Tire Temperature
-  Pulls in Factory TPMS Data into OneView

Benefits



Improved Fleet & Health Visibility

- Limit tread wear and tire leak repairs by taking action on maintenance needs as soon as they are detected
- Quickly identify tire leaks that could lead to roadside accidents
- Simplify and enhance pre- and post-trip inspections



Reduce Unplanned Downtime

- Get insights for fast and slow tire leaks, tire over-inflation
- Improve vehicle cost of ownership by optimizing maintenance intervals and avoiding unplanned downtime
- Extend the service life and improve tire performance across your fleet
- Take early action to avoid costly downtime due to roadside repairs and unplanned maintenance



Maximize Uptime

- Increase fuel efficiency by ensuring proper tire inflation
- Strengthen driver satisfaction and retention

Request a Custom Demo Today

PedigreeTech.io | 701.293.9949

How It Works

The TPMS sensors monitor pressure within the tire of where they are attached to provide information about proper operation pressure before trips, slow or fast leaks, and high temperature.

The telematics devices fitted on the tractor/trailer receive data from reliable TPMS sensors and transmit it efficiently to a robust cloud database. The data is then analyzed, and valuable insights are presented within the OneView™ platform.

The TPMS Advantage

- ✓ Improved Safety
- ✓ Fewer Roadside Events
- ✓ Extended Tire and Tread Life
- ✓ Better Fuel Economy
- ✓ Expedited Inspections
- ✓ Reduce Carbon Footprint
- ✓ Cost Savings

TECHNICAL SPECIFICATIONS

| | |
|--------------------|--|
| Battery Life | 5 Years |
| Battery Type | Lithium-ion |
| Dimensions (WxDxH) | Cap Valve: 0.7 (H) x 0.8 in (W) (17.8 (H) x 20.3 mm (W)) Pass-Through: 0.9 x 0.8 x 1.5 in (22.9 x 20.3 x 38.1 mm) |
| Connectivity | Bluetooth® |
| IP Rating | IP69K |
| Temperature | -40 to 203°F (-40 to 95°C) |



CONNECT THE UNCONNECTED.

Giving you the power to access all equipment, vehicles, and assets in OneView™

- ✓ Truck, Trailer & Asset Management
- ✓ Safety & Compliance
- ✓ Enhanced Fleet Solutions
- ✓ API Integrations

